

Investment Opportunities in Extremadura: **DATA CENTER**



JUNTA DE EXTREMADURA



FUNDECYTPCTEX

SCENARIO

1.07 millions inhabitants

Population similar to the city of Cologne
(Germany)

8.1% of the national territory. Area 41.634 km²

More extensive than Belgium or Holland

Density of 26 inh/km²

EU rural concept 30 inh/km²)

388 Small municipalities

90% under 5.000 inh.

2 main cities

Badajoz 150.702 inh.

Cáceres 96.126 inh.

The only **Objective 1 region in Spain**
for the European Cohesion Funds



JUNTA DE EXTREMADURA



FUNDECYTPCTEX

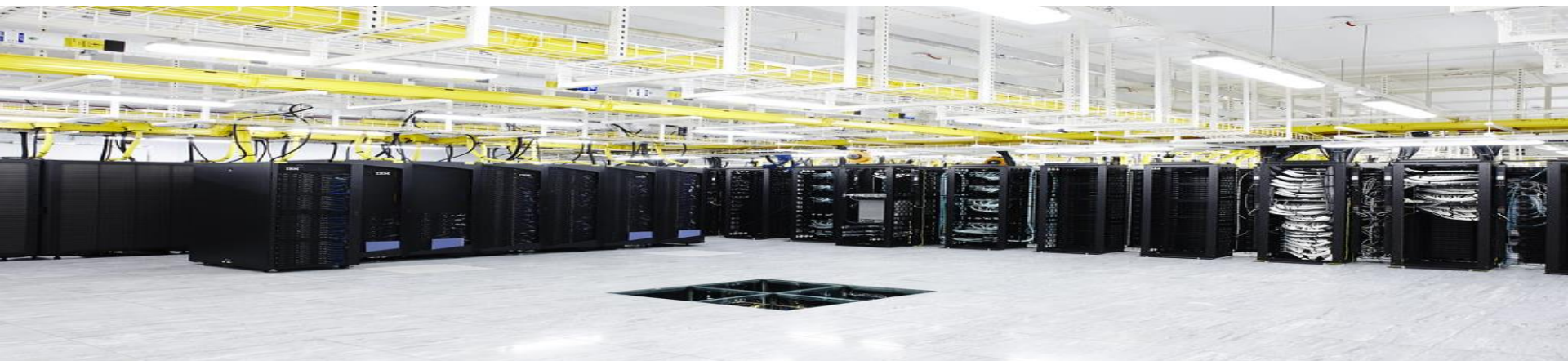
SCENARIO

- One of the largest **water reserves** in Spain (14,000 hm³).
- Crossed by two of the most important rivers in the peninsula: **Tajo y Guadiana.**
- **High Biodiversity**
- Three **World Heritage Sites**
- **Urbanized logistic and industrial land** with supply of all the essential services.



Optimal conditions for the location of a DATA CENTER

1. **Energy consumption: Need for an extra power source.**
2. **Physical security of all equipment and wiring systems.**
3. **Connection network. Low latency and high bandwidth.**
4. **Infrastructures and technological development.**



Optimal conditions for the location of a DATA CENTER.

1. Energy consumption: Need for an extra power source.

Extremadura:

- Has sustainable energy production.
- Is a national leader in electricity production with solar technology, especially **photovoltaic energy**.
- **Has energy surplus:** Extremadura generates 8.04% of the electricity in Spain and consumes 1.88%.
- **Has a biomass potential** of more than 4 million tons every year.



Optimal conditions for the location of a DATA CENTER.

2. Physical security of all the equipment and wiring systems.

Extremadura has:

The most demanding installations in terms of safety, **Almaraz Nuclear Power Plants**. Following extensive and detailed studies of the topography of the site, the results concluded that the **site chosen was suitable due to its seismotectonic, geological, hydrological and climatological characteristics.**



Optimal conditions for the location of a DATA CENTER.

3. Connection network. Low latency and high bandwidth.

Extremadura has:

- Ability to connect with main telecommunications providers, Telefonica, BT, ...
- In addition, we have POPs of the regional, national and international academic networks.

Connections can be made from north to south and east to west using the existing dark fiber on the highways that cross the region.



Optimal conditions for the location of a DATA CENTER.

4. Infrastructures and technological development.

Extremadura has:

- A group of small highly qualified **tech companies** in **software development or advanced computing**, highlighting multinational software companies such as INDRA, VIEWNEXT, SINGULAR, WORLDLINE IBERIA SA and METADATOL S.L. located in the Science and Technology Park of Extremadura, and IBERMÁTICA, considered among the top five IT service companies in Spain.
- Support agencies and scientific infrastructures that are associated with the IT sector.
- The **University of Extremadura** with **research groups** that are specialized in **software engineering, electrical and electronic power systems, robotics and automation**, among others.



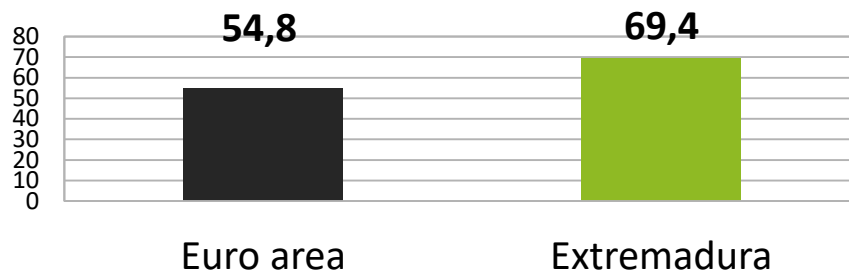
Existing high performance infrastructures.



JUNTA DE EXTREMADURA



Human Capital and Talent.



Working population between 25 and 65 years of age with higher education:

Increment of a **69,4 %** since 2002

Good engineers and ICT technicians



The University of Extremadura is part of *the European Higher Education Area*



JUNTA DE EXTREMADURA



Tools, mechanisms and institutions to develop investments.



Export promotion Private
Equity
Infrastructures and
spaces



Soft Landing
Evaluation stage and
decision making
Stage of implementation
After-Care



Enterprise Europe Network
O4i
CEEI
Red PIDI

Network and
partnerships

Pacific alliance
Euroace
Halal Food
União de Esportadores da CPLP
EER Extremadura



JUNTA DE EXTREMADURA



In addition to the later, it is worth noting that

Extremadura has the **redundancy** of **power suppliers** (both local and national, Iberdrola, Eléctricas Pitarch, Endesa, Grupo Laura Otero, ...), **river basins** (Tajo and Guadiana), **connection networks** (both local and national, Telefónica, British Telecom), and the **electrical capacity of two nuclear reactors** plus the **largest photovoltaic plants in Europe**.



FUNDING.



- **SUPPORT LINE FOR ACTIONS IN RENEWABLE ENERGIES IN EXTREMADURA. (Decree 110).**
- **REGIONAL R&D LINES (Decree 113).**
- **EMPLOYMENT. AIDS FOR THE RECRUITMENT OF PERSONNEL.**
- **REGIONAL INVESTMENT INCENTIVES. (Decree 185).**
- **REGIONAL INCENTIVES. (Decree 303/2015).**
- **COMPETITIVE IMPROVEMENT OF SMES IN EXTREMADURA. (Decree 105).**



JUNTA DE EXTREMADURA

¡THANKS FOR YOUR
ATTENTION!